

The background of the slide features a photograph of Vancouver City Hall on the left, a brick building with large glass windows. On the right, there is a hanging flower basket filled with vibrant pink and purple flowers. A street light pole is visible in the upper right corner. The text is overlaid on a semi-transparent dark blue rectangular area.

# Westside Bike Mobility Project Update and Pavement Management – Columbia Street 2021

# Presentation Overview

- Westside Mobility Project – Background & Status
- 2021 Pavement Management Program
  - Columbia Corridor Preservation & Resurfacing
  - Communications Outreach and Updates
- Mobility Project Implementation
  - Overview of Project Elements
  - Additional Efforts & Post-Project Assessment
  - Continued Outreach & Updates

# Project Background

- Summer 2018: Work begins on Westside Mobility Strategy recommendation to identify a north-south bike route in west Vancouver. Project also needs to meet City's Complete Streets Policy (2017) with safe and comfortable bike route for all ages.
- Community response divided over tradeoffs of Complete Street benefits vs. on-street parking removal. Community Advisory Committee formed but also unable to reach consensus on alternative route or design for Columbia Street.
- February 2020: Council directs staff to implement mobility project improvements on Columbia Street in coordination with Pavement Management work in 2020 and 2021.
- March/April 2020: Mobility Project implementation postponed due to COVID-19 pandemic. Pavement Management scaled back in 2020 due to COVID-19 impacts and financial concerns.

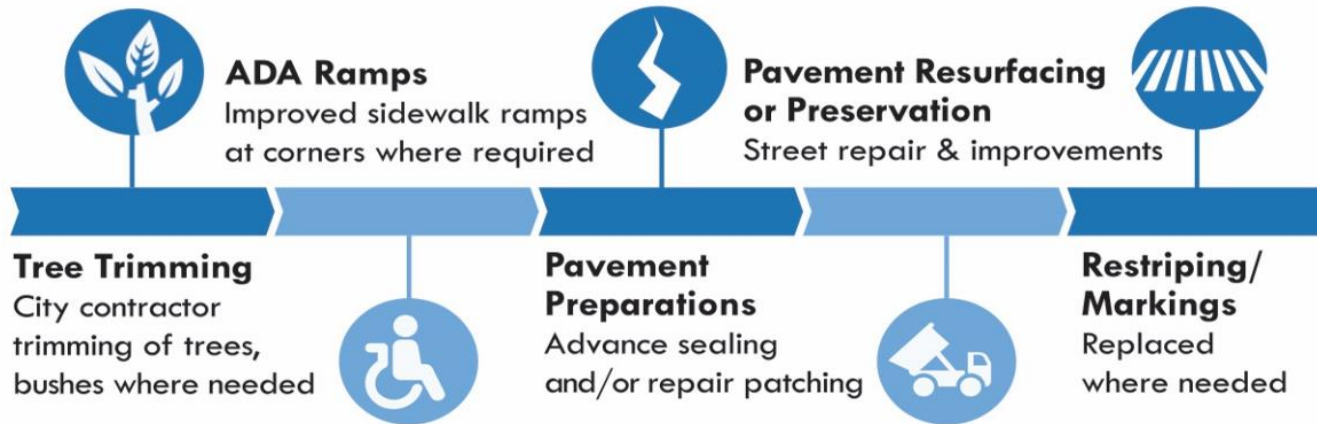
# Project Status Update

- City applied for Mobility Project grant; results to be announced mid-year 2021. Council approved project budget as backup.
- With TBD vehicle license fee funding restored, full Pavement Management program planned for 2021. For cost and construction efficiencies, Columbia Street Mobility Project implementation and Pavement Management work now scheduled to all be done in 2021, Columbia Way to 45<sup>th</sup> Street.
- Mobility Project design nearly complete. Outreach underway.
- General Order of Coming Work on Columbia Street:
  - Pavement Management – Multiple Steps
  - Mobility Project Implementation
  - Mobility Project Follow-up and Assessment
  - Communications and Updates Throughout

# Pavement Management

- Pavement Management Program Overview
- Columbia Street for 2021:
  - Columbia Way to Mill Plain Blvd – Microsurfacing
  - Mill Plain Blvd to 45<sup>th</sup> Street – Paving
  - ADA Ramp Upgrades: Approximately 43 locations

# Pavement Management – Steps



- **Tree/Vegetation Trimming** where needed
- **ADA Ramps** upgraded to current standards where needed
- **Crack Sealing/Patching** in preparation for coming work
- **Microsurfacing** – Quick-setting emulsion preserves pavement
- **Paving** – Milling/grinding, then paving with hot-mix asphalt

# Pavement Management Examples



# Pavement Management – Communications

- Keeping You Informed!
  - Postcards in the Project Area
  - Neighborhood Association Emails
  - Nextdoor Updates
  - Public Works Facebook & Twitter
    - [www.facebook.com/VancouverPublicWorks](https://www.facebook.com/VancouverPublicWorks)
    - @VanPubWorks
  - Coordination of Services – C-TRAN, Waste Connections, etc.
  - Electronic Message Boards
  - Webpage: [www.cityofvancouver.us/pavement](https://www.cityofvancouver.us/pavement)



\*Please note: Weather can impact schedules.



# Columbia Street Improvements

## Columbia Way to West 8<sup>th</sup> Street:

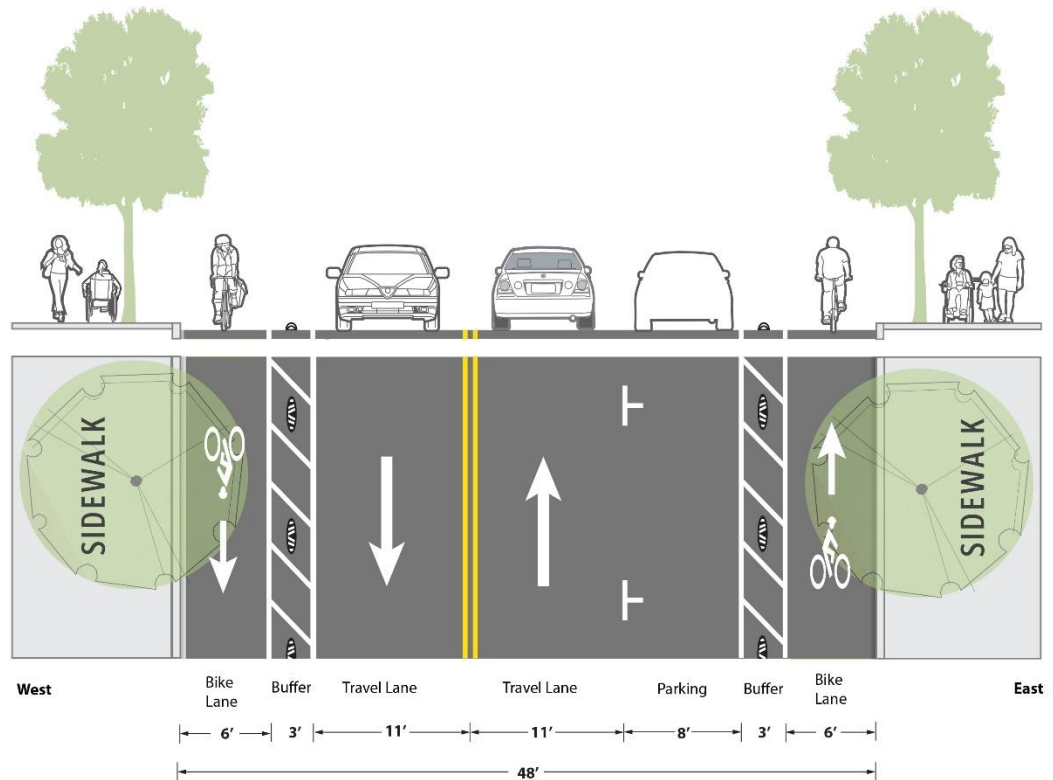
- Markings added to emphasize shared use path, signage added to show shared use path is pedestrian priority and others should go slow
- Existing north/south bike lanes and on-street parking retained
- Two-stage left-turn boxes added for those on bikes turning left on Columbia from 8<sup>th</sup> Street and for turning left on 8<sup>th</sup> Street from Columbia



# Columbia Street Improvements

## West 8<sup>th</sup> Street to West 12<sup>th</sup> Street:

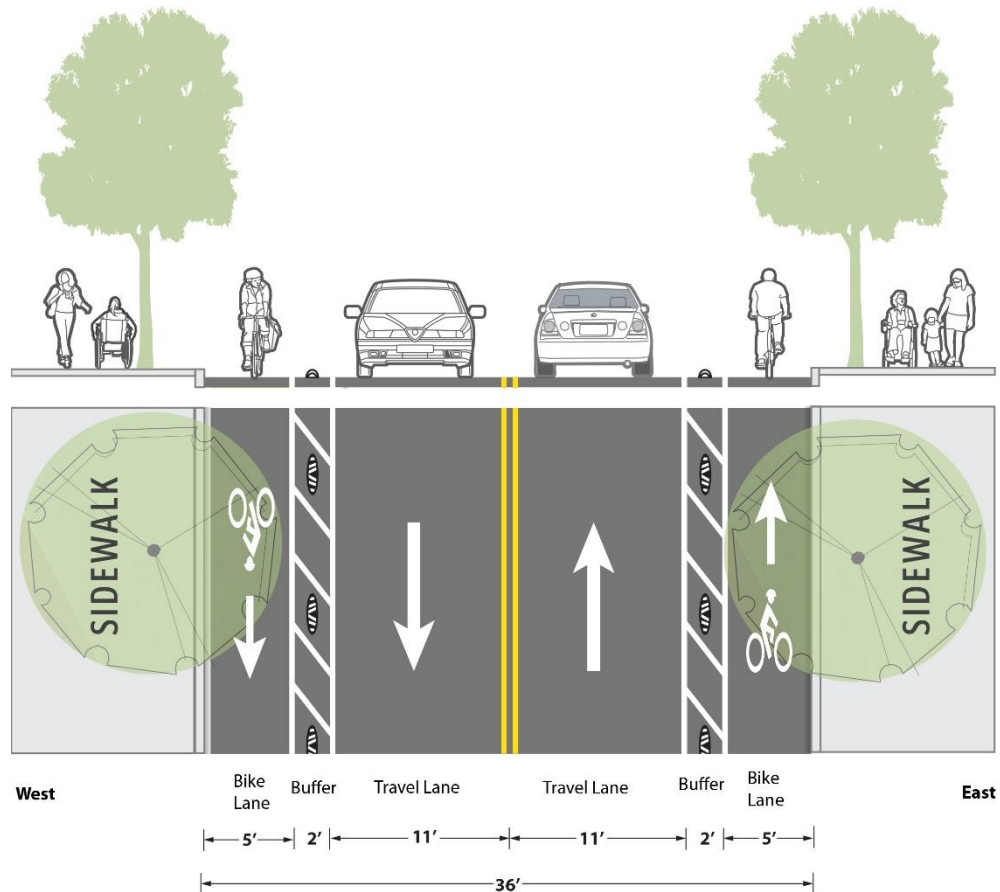
- Parking-protected bike lane northbound and southbound
- On-street parking removed on west side of Columbia
- On-street parking preserved on east side of Columbia



# Columbia Street Improvements

## West 12<sup>th</sup> Street to West 13<sup>th</sup> Street:

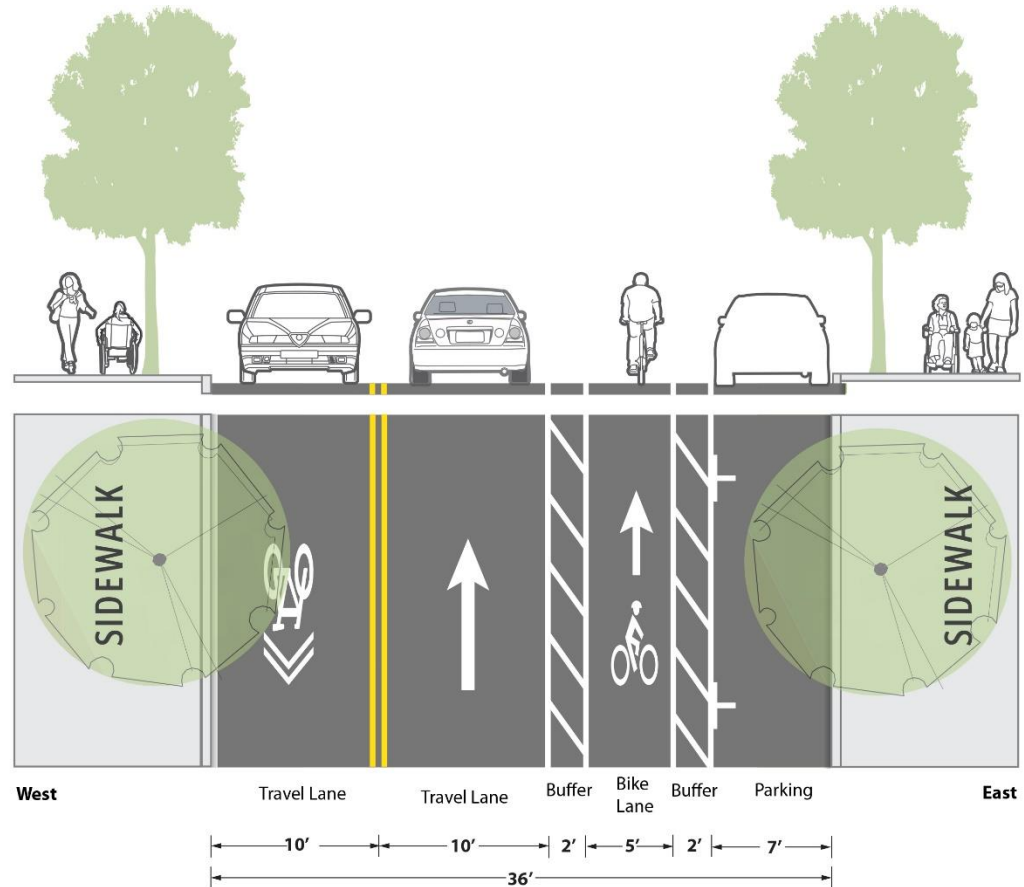
- Protected bike lanes both directions
- No existing parking so no parking removal



# Columbia Street Improvements

## West 13<sup>th</sup> Street to Mill Plain Boulevard:

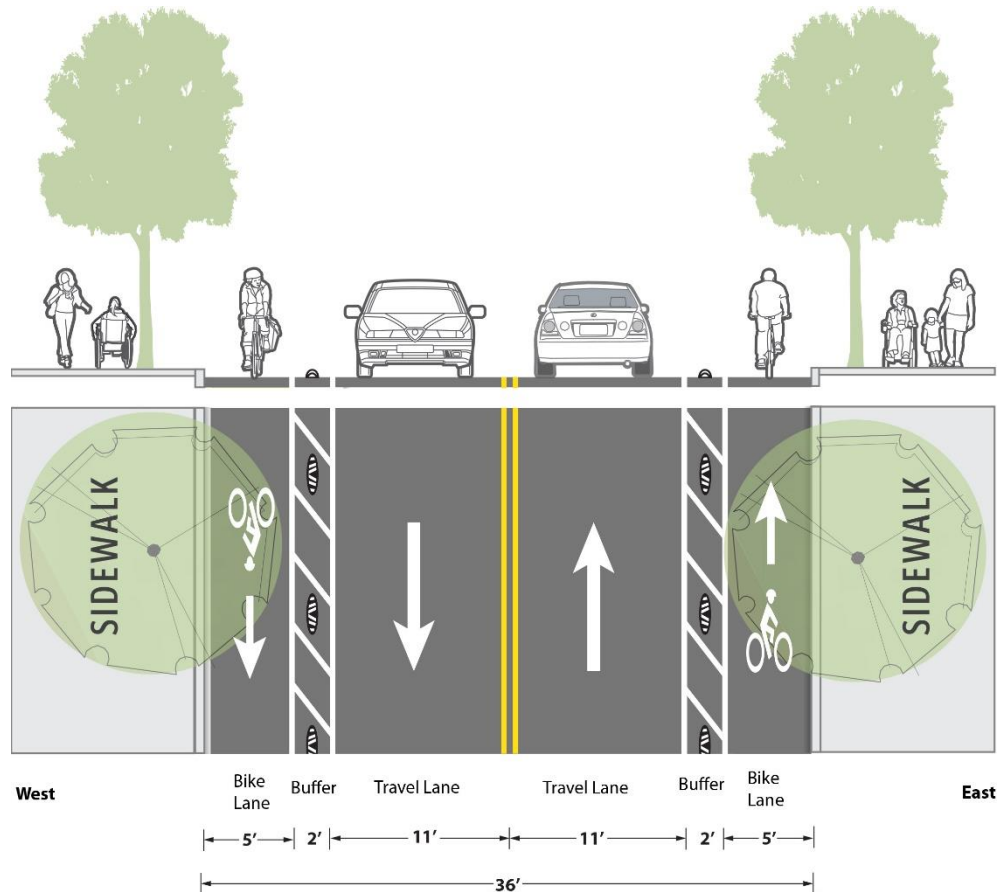
- Buffered bike lane northbound
- Shared biking/driving lane southbound
- On-street parking preserved on east side adjacent to Veterans Assistance Center, add VAC drop-off zone



# Columbia Street Improvements

## Mill Plain Boulevard to 45<sup>th</sup> Street:

- Protected bike lanes both directions
- On-street parking removed on both sides of Columbia Street in this section



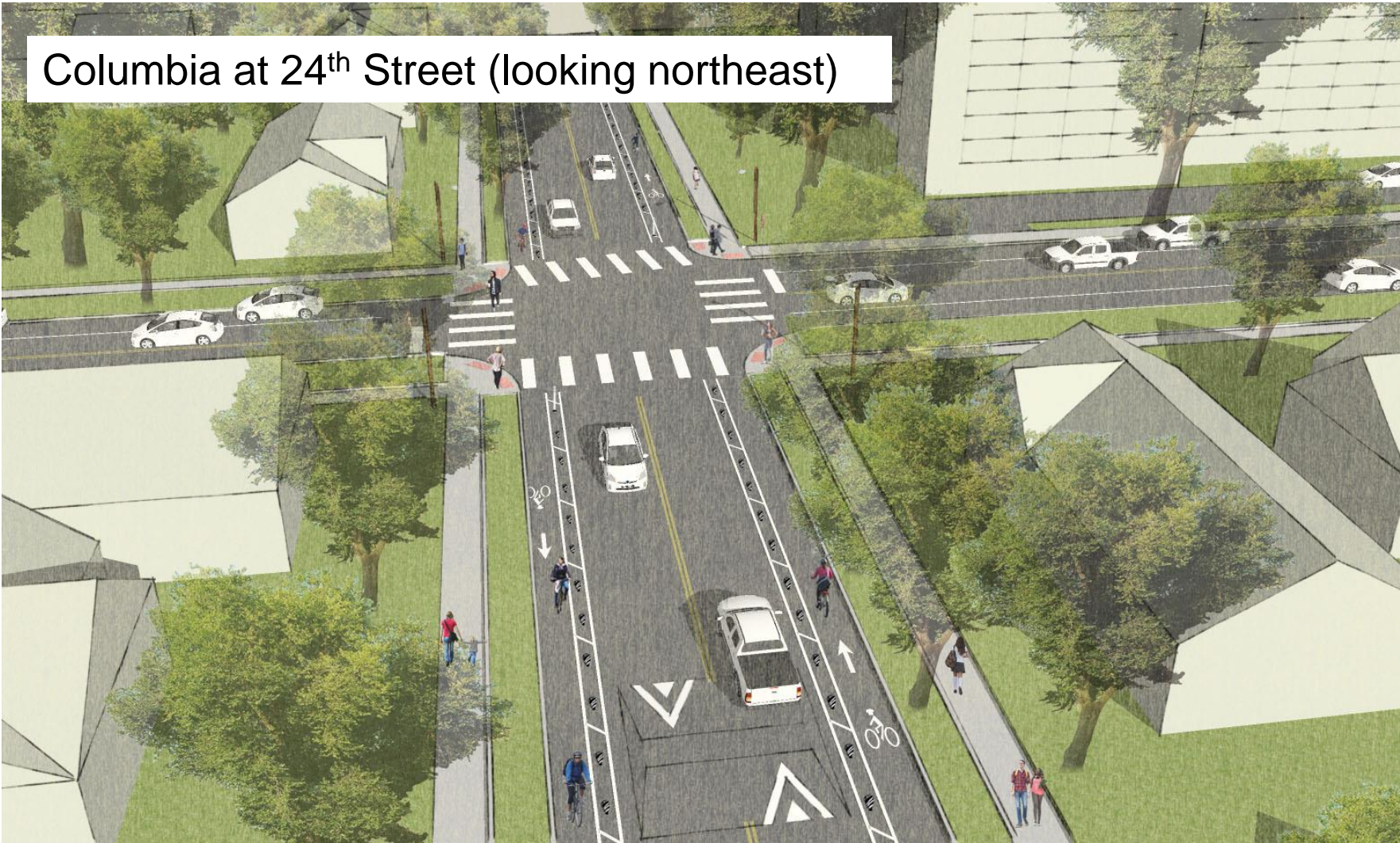
# Columbia Street Improvements

Columbia at McLoughlin (looking northwest)



# Columbia Street Improvements

Columbia at 24<sup>th</sup> Street (looking northeast)



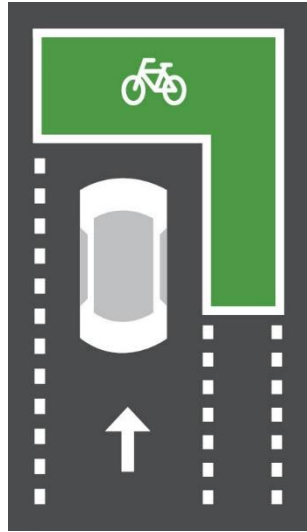
# Columbia Street Mobility Project

- Additional Safety/Multimodal Improvements include:
  - Bike boxes at major intersections
  - Green “crossbikes”/bike lane extensions (like crosswalks but for people biking) at some major intersections
  - New speed tables, and replace existing speed humps with speed tables
  - Traffic signal improvements for people walking (Leading Pedestrian Intervals)
  - Bike detection at Columbia & Fourth Plain signal
  - Bicycle and pedestrian counters
  - Convert existing crosswalks to more visible ladder-style, add new crosswalks

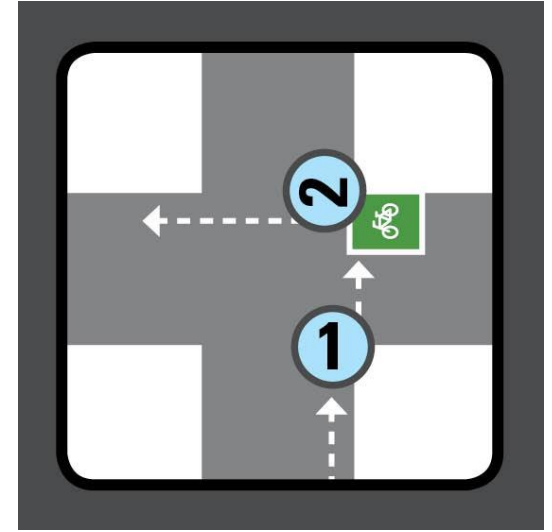


# Multimodal Improvements

Bike Box  
(Source: City of Seattle)



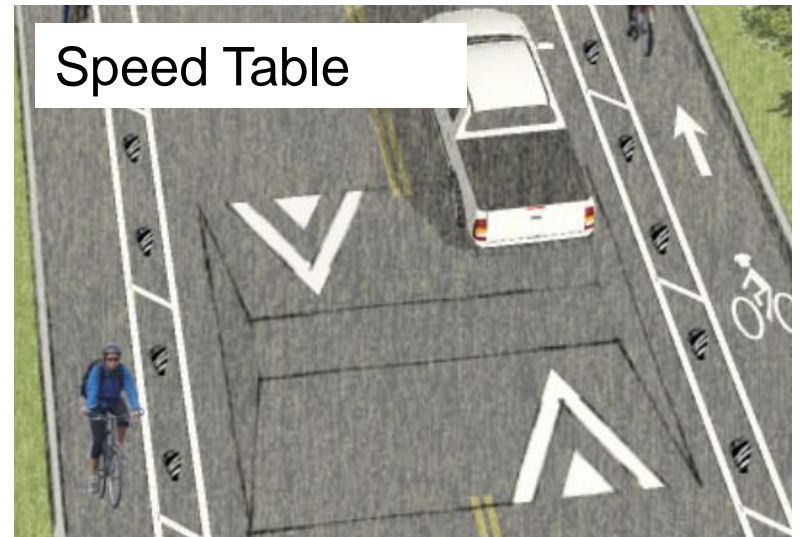
Two-Stage Left Turn Box  
(Source: City of Seattle)



Crossbike/Bike Lane Extension  
(Source: UAB)



Speed Table

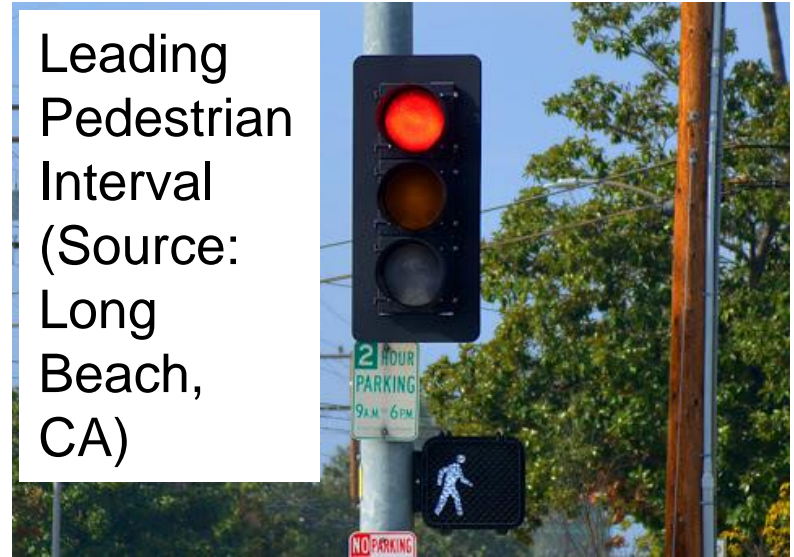


# Multimodal Improvements

Zicla®  
Zebra®  
bike lane  
separator



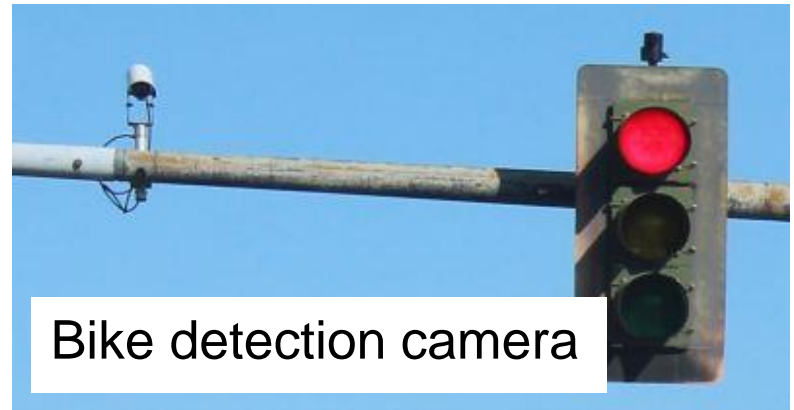
Leading  
Pedestrian  
Interval  
(Source:  
Long  
Beach,  
CA)



Ladder-style  
crosswalk



Bike detection camera



(Source: Alaska DOT)

# Columbia Street Mobility Project

- Additional Safety/Multimodal Improvements include (continued):
  - New/upgraded LED streetlights
  - Improved parking options for Veterans Assistance Center staff/visitors
  - Residential parking program with designated ADA spaces where needed to serve those impacted by on-street parking removal
- Post Implementation:
  - Follow-up includes technical assistance for affected residents who want to create off-street parking
  - Thorough project assessment with posted results

# Contact Information

- Mobility Project webpages:
  - [www.beheardvancouver.org/westside-bike-mobility](http://www.beheardvancouver.org/westside-bike-mobility)
  - [www.cityofvancouver.us/bikemobility](http://www.cityofvancouver.us/bikemobility)
- Contact the Mobility Project team:
  - Email: [westsidemobility@cityofvancouver.us](mailto:westsidemobility@cityofvancouver.us)
  - Phone: 360-487-7947

## Pavement Management webpages:

- [www.cityofvancouver.us/pavement](http://www.cityofvancouver.us/pavement)
- [www.cityofvancouver.us/PMSchedule](http://www.cityofvancouver.us/PMSchedule)